

RE: Changing Boundaries of Eastern and Western Magisterial Districts and Precinct Line between Precincts 8 and 9 and Precincts 5 and 7

New legislation was passed which changed Pendleton County's Delegate Districts and Congressional District. Delegate District 67 will consist of Voting Precincts 3, 5, 8, 13 and 14. Delegate District 86 will consist of Voting Precincts 2, 7, 9 and 11. The County will be in Congressional District 1. The Senatorial District will remain as the 11th District.

THIS 4th day of January 2022, the County Commission of Pendleton County, West Virginia, sitting in regular session does hereby ORDER the magisterial district boundaries, pursuant to W. Va. Code §7-2-2, of the Eastern District and Western District to be amended by following the new Delegate District line and thus also creating a new boundary line between Precincts 8 and 9 as follows:

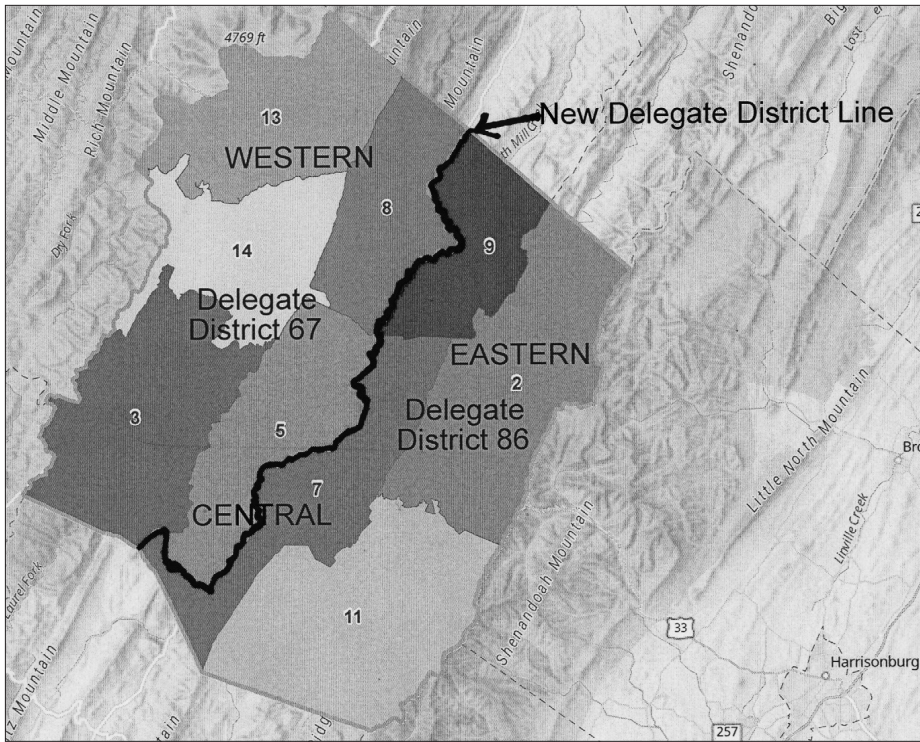
Beginning on U.S. Route 220 at the Grant County/Pendleton County line and going south on U.S. Route 220 to the bridge before Elderberry Lane and making a slight curve east of U.S. Route 220 and following North Mill Creek until just past Long Way Drive then turning east through a field to a point between 172 Ridge Road and 205 Ridge Road and then following Ridge Road to South Mill Creek Road. Turning West onto South Mill Creek Road and continuing to Greenawalt Gap Road then on to Schmucker Road to Mount Hope Road. Following Mount Hope Road to a point past Louie Run Road, then turning west to the South Branch Potomac River, and following the river until a point behind Ruddle Park where it veers slightly east through two farm fields, crossing over Potomac River Lane then to River Mountain Lane and following the South Branch Potomac River to the beginning of Hammer Run Road in Ruddle where the Central District line begins.

The new Delegate line has also changed the boundary line for Precincts 5 and 7. The new boundary line between Precincts 5 and 7 will now run North to South with Precinct 5 west of the new delegate line and Precinct 7 east of the new delegate line as follows:

Beginning at Hammer Run Road at U.S. Route 220 and on the eastern side of the South Branch of the Potomac River, following the river south east through River Gap and going above 1141 Blue Gray Trail to U.S. Route 33/Blue Gray Trail. Then coming down Blue Gray Trail and across the bridge then turning east to again follow the South Branch of the Potomac River, around the Town of Franklin, over the low water bridge and then veering west across U.S. Route 220, up the hill to the St. Elizabeth Ann Seton Church to Hall's Hill Road. Continue following Hall's Hill Road, through Oak Grove, where the road now becomes Smith Creek Road, and following Smith Creek Road, then veering east before Walnut Ridge Lane, going behind 85 Little Creek Lane and coming out onto Little Creek Lane at Sage Field Lane. Following Little Creek Lane which becomes Hunter Hills Lane and following Hunter Hills Lane to Moyer Run Lane then turning east on Moyer Run Lane until U.S. Route 220. Following south on U.S. Route 220 to Snowy Mountain Road. Turn west onto Snowy Mountain Road and follow that road until just past 4033 Snowy Mountain Road then turn south and across the top of the ridge to the West Virginia/Virginia state line.

Precincts 3, 8, 13 and 14 will remain in the Western District, Precincts 5 and 7 will remain in the Central District and Precincts 2, 9 and 11 will remain in the Eastern District.

Consequently, the County Commission has this day unanimously voted to ORDER the boundaries of the Eastern Magisterial District and Western Magisterial District to be changed along with the boundaries of Precincts 5, 7, 8 and 9.



ENTERED this 4th day of January 2022.

PENDLETON COUNTY COMMISSION

Gene McConnell, Commission President
Carl Hevener, Commissioner
Carole Hartman, Commissioner