

LEGAL ADVERTISEMENTS

■ Continued from page 9B

SCHEDULE OF PROPOSED LEVY RATES
HAMPSHIRE COUNTY BOARD OF EDUCATION
For the Fiscal Year Ended June 30, 2027

The following is a true copy from the record of orders entered by HAMPSHIRE COUNTY BOARD OF EDUCATION on the 16th day of March 2026:

	Excess Levy		Permanent Improvement		Bond Levy	
	Levy Rates/\$100	Taxes Levied	Levy Rates/\$100	Taxes Levied	Levy Rates/\$100	Taxes Levied
Class I						
Personal Property	-	\$ -	-	\$ -	6.26	\$ -
Public Utilities		-		\$ -		-
Total Class I		-		\$ -		-
Class II						
Real Estate	-	-	-	\$ -	12.52	1,279,698
Personal Property		-		\$ -		6,380
Total Class II		-		\$ -		1,286,078
Class III						
Real Estate	-	-	-	\$ -	25.04	732,442
Personal Property		-		\$ -		455,309
Public Utilities		-		\$ -		458,051
Total Class III		-		\$ -		1,645,802
Class IV						
Real Estate	-	-	-	\$ -	25.04	81,435
Personal Property		-		\$ -		43,866
Public Utilities		-		\$ -		19,526
Total Class IV		-		\$ -		144,827
Total Assessed Valuation and Projected Gross Tax Collections		\$ -		\$ -		\$ 3,076,707
Less Allowance for Uncollectibles, Exonerations & Delinquencies	5.00%	-	5.00%	-	4.83%	\$ 148,507
Less Allowance for Tax Discounts	2.00%	-	2.00%	-		
Less Allowance for Tax Increment Financing see worksheet P/I		-		-		
Net Projected Tax Collections, before Assessor's Fund		-		-		
Less - Allowance for Assessor's Valuation Fund		-		-		
Projected Net Taxes to be Collected		\$ -		\$ -		\$ 2,928,200
Total Projected Net Taxes from Regular and Excess Levies		\$ 8,699,403				

SIGNED THIS 16TH DAY OF MARCH, 2026 BY
George R. Collett
SECRETARY OF THE BOARD OF EDUCATION

4-22-2c

SCHEDULE OF PROPOSED LEVY RATES
HAMPSHIRE COUNTY BOARD OF EDUCATION
For the Fiscal Year Ended June 30, 2027

The following is a true copy from the record of orders entered by HAMPSHIRE COUNTY BOARD OF EDUCATION on the 16th day of March 2026:

	Certificate of Valuation Assessed Value For Tax Purposes	Current Expense Levy	
		Levy Rate/\$100	Taxes Levied
Class I			
Personal Property	\$ -	19.40	\$ -
Public Utilities	-		-
Total Class I	-		-
Class II			
Real Estate	1,022,123,270	38.80	3,965,838
Personal Property	5,095,876		19,772
Total Class II	1,027,219,146		3,985,610
Class III			
Real Estate	292,508,750	77.60	2,269,868
Personal Property	181,832,583		1,411,021
Public Utilities	182,927,705		1,419,519
Total Class III	657,269,038		5,100,408
Class IV			
Real Estate	32,522,150	77.60	252,372
Personal Property	17,518,506		135,944
Public Utilities	7,797,915		60,512
Total Class IV	57,838,571		448,828
Total Assessed Valuation and Projected Gross Tax Collections	\$ 1,742,326,755		\$ 9,534,846
Less Allowance for Uncollectibles, Exonerations & Delinquencies		5.00%	(476,742)
Less Allowance for Tax Discounts		2.00%	(181,162)
Less Allowance for Tax Increment Financing - see worksheet (Subtracted from regular current expense tax levy only)			-
Net Projected Tax Collections, before allowance for Assessor's Valuation Fund			8,876,942
Less - Allowance for Assessor's Valuation Fund (Subtracted from regular current expense tax levy only)		2.00%	(177,539)
Projected Net Taxes to be Collected			\$ 8,699,403

Note: Copies of all approved excess and/or bond levy orders and certified copies of the canvass of votes must be on file with the State Auditor's Office and the State Department of Education before excess or bond levy rates can be approved.

SIGNED THIS 16TH DAY OF MARCH, 2026 BY
George R. Collett
SECRETARY OF THE BOARD OF EDUCATION

4-22-2c

Farm

Survey: Most farmers can't afford fertilizer

Review Staff

WASHINGTON, D.C. — An overwhelming majority of America's farmers who responded to a nationwide survey say they cannot afford to purchase enough fertilizer to get them through the year. The percentage who pre-purchased fertilizer varies significantly by region, according to a West Virginia Farm Bureau release.

Conducted by the American Farm Bureau Federation April 3-11, the survey shows 70% of respondents say fertilizer is so expensive that they will not be able to buy all the fertilizer they need.

More than 5,700 farmers,

both Farm Bureau members and non-members, from every state and Puerto Rico took the survey. Farm Bureau economists analyzed the results in the latest Market Intel.

The analysis reveals that almost eight in 10 farmers in the southern U.S. say they can't afford all needed supplies this year, followed by the Northeast and West at 69% and 66%, respectively, compared to 48% of the farmers in the Midwest.

Just 19% of farmers in the South prebooked fertilizer purchases in advance of planting season. In the Northeast, only 30% of farmers prebooked, followed by 31% in the West, and

67% in the Midwest. Even with higher pre-booking rates, almost one in three midwestern farmers still report entering the season without securing all of their fertilizer needs.

The conflict in the Middle East sent fertilizer and fuel prices soaring. The closure of the Strait of Hormuz is keeping critical fertilizer supplies and crude oil from reaching global markets, putting a squeeze on supplies around the world.

"Spring planting decisions depend heavily on access to fertilizer and diesel fuel, both of which have been impacted by geopolitical risks that have disrupted global markets," the Mar-

ket Intel states. "Since the escalation of tensions in the Middle East, nitrogen fertilizer prices have risen more than 30%, while combined fuel and fertilizer costs have increased roughly 20% to 40%. Urea prices have increased by 47% since the end of February, marking the largest month-to-month percentage increase in the price of urea. These increases are occurring when many producers were already facing tight margins for many consecutive years."

Many of the farmers surveyed said they will forego applying fertilizer this spring in hopes that prices will return to an affordable level later in the grow-

ing season.

AFBF President Zippy Duvall said, "The skyrocketing cost of fuel and fertilizer is creating more economic hardships for farmers who have already endured years of losses. Without the necessary fertilizers, we'll face lower yields and some farmers will reduce acres altogether, which will impact food and feed supplies. It's too early to know how this will affect food availability and prices in the long run, but it's a warning light that we've shared with leaders in Washington. We look forward to working with them to find solutions so farmers can continue to feed families across

America."

According to the survey, 94% of respondents reported their financial situation has worsened or remained the same since last year, while only 6% reported improvement. □

LIVESTOCK REPORTS

FOUR STATES LIVESTOCK
PO Box 108, Hagerstown, Md.
301-733-8120

Wednesday, April 15, 2026

SLAUGHTER COWS: 124 Head, By the Pound - Fleshy Beef: 1400-1900 lbs. - \$185-219. Breakers: H Dressing - \$170-180. Avg. Dressing - \$165-170. Boners: H Dressing - \$170-180. Avg. Dressing - \$162-170. Lean: H Dressing - \$160-165. Avg. Dressing - \$150-160.

BULLS: 6 Head, By the Pound - YG #1: 1500-2000 lbs. - \$205-272. H Dressing: 1800-2000 lbs. - \$242.

FED CATTLE: 8 Head, By the Pound - H Ch Steers: 1438 lbs. - \$247. L CH Steers: 1806 lbs. - \$220. H Ch Heifers: 1250-1500 lbs. - \$241-245.

HOLSTEIN BULL CALVES: 73 Head, By the Pound - Number 1: 78-98 lbs. - \$1575-1775; 86 lbs. - \$1825; 104-112 lbs. - \$1425-1575. Hol Heifers: 80 lbs. - \$1900; 70-90 lbs. - \$1000-1625. Beef Bulls #1: 78 lbs. - \$2250; 72-92 lbs. - \$900-2050. Beef Heifers: 70-98 lbs. - \$1500-2300; 116-120 lbs. - \$1125-1550.

BUTCHER HOGS: 95 Head, By the Pound - 239-259 lbs. - \$50-70; 260-289 lbs. - \$55-70; 290-325 lbs. - \$60-70; 326-350 lbs. - \$40-60; 351-375 lbs. - \$55; 376-405 lbs. - \$35-55.

SOWS: 8 Head - 300-399 lbs. - \$40-60. 400-499 lbs. - \$40; 500-599 lbs. - \$50.

BOARS: 2 Head - 602 lbs. - \$5. Stock Boars: 372 lbs. - \$36.

PIGS & SHOATS: 55 Head - By the Head: 27-28 lbs. - \$90-100; 58 lbs. - \$87.50; 63-65 lbs. - \$95-170; 65 lbs. - \$345; 86 lbs. - \$60. By the Pound: 106-106 lbs. - \$33-40; 137 lbs. - \$62.50; 148-160 lbs. - \$30-35.

STOCK CATTLE: 179 Head, By the Pound - FEEDER HEIFERS: 200-300 lbs. - \$310-440. M&L

1+2: 301-400 lbs. - \$395-495; 401-500 lbs. - \$310-425; 501-600 lbs. - \$285-375; 601-700 lbs. - \$290-330; 701-834 lbs. - \$262.50-300; 901-980 lbs. - \$217.50-245. **FEEDER STEERS:** 200-300 lbs. - \$480-570. M&L 1+2: 314 lbs. - \$440; 401-500 lbs. - \$300-470; 501-600 lbs. - \$320-480; 601-700 lbs. - \$325-420; 734-800 lbs. - \$250-320; 908-952 lbs. - \$245-290. **FEEDER BULLS**

- 200-300 lbs. - \$340-525. M&L 1+2: 300-400 lbs. - \$340-440; 401-500 lbs. - \$330-440; 434 lbs. - \$1075; 501-600 lbs. - \$280-425; 601-700 lbs. - \$315-390; 701-840 lbs. - \$260-340. Stock Bulls: 1142-1326 lbs. - \$210-250.

STOCK COWS: 25 Head, By the Head - Cow Calf Pair: \$2950. Bred Cow 45-60 days: \$1800-2450; 2-4 months: \$2000-2900; 5-7 months: \$1825-2600; 8 months:

\$1450-3250. **GOATS: 36 Head, By the Head** - Billies: 144-158 lbs. - \$420-480. Nannies: 98-158 lbs. - \$250-375. Kids: Under 30 lbs. - \$40-65; 30-50 lbs. - \$160-235; 51-70 lbs. - \$195-205; 71-90 lbs. - \$160-260. **LAMBS: 35 Head** - By the Pound: 28-39 lbs. - \$290-300; 41-61 lbs. - \$350-420; 61-80 lbs. - \$300-390; 81-109 lbs. - \$180-400. **SHEEP: 63 Head, By the Pound**

Ewes: Under 150 lbs. - \$110-235; 151-200 lbs. - \$140-220. Rams: 108-128 lbs. - \$230-235.

FARM & GARDEN Resource Directory
ADAMS EQUIPMENT CO.
304-298-3726 • Route 28, Fort Ashby, WV
New & Used Tractor Sales
Parts & Service
LS Tractors / TYM Tractors
Land Pride Zero Turn Mowers & Implements

CALL 304-822-3871, EXT. 105 TODAY TO PLACE YOUR AD IN THIS DIRECTORY.

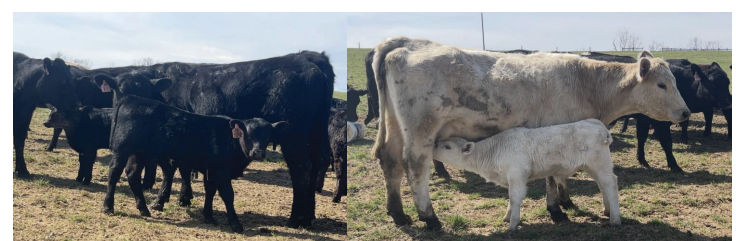
Farmers Livestock Exchange, Winchester, VA
Scott Stickley, Manager Jeff Eckersley, Office Manager

Replacement Cow Sale
Friday April 24th at 7:00pm

www.farmerslivestockva.com
540-667-1023

Estimated Cattle
60-Heifer/calf pairs
45-Cow/calf pairs
15-Bred Heifers
5-Bred Cows
2-Bulls

All bred cattle will be examined by our Vet-safe with calf
Special Thanks to all of our Consignors!!



ATTENTION

National FFA Organization

YOUR INVITED: MEMBERS, PARENTS, ALUMNI, HONORARY, FFA SPONSORS AND SUPPORTERS, HHS FACULTY AND BOARD OF EDUCATION

The officers and members of the Hampshire County FFA chapter request the pleasure of your company at our

Annual Parent & Member Banquet
Saturday, May 16, 2026 • 4 p.m.

Hampshire High School Gymnasium
The chapter is furnishing ham, chicken, drinks, dinner rolls.
We are asking parents to bring a covered dish.